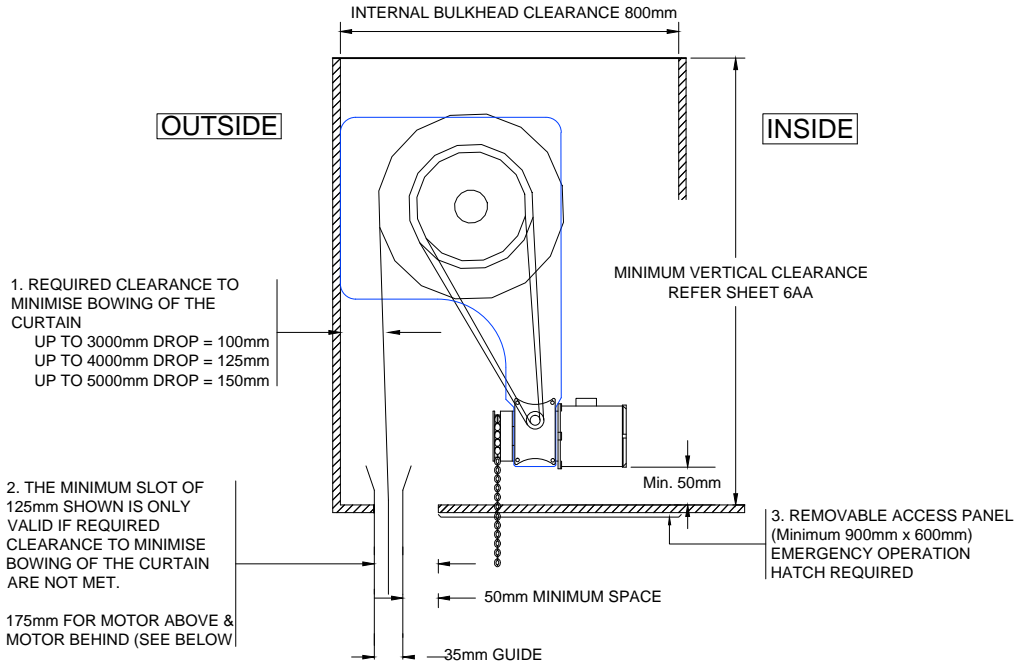
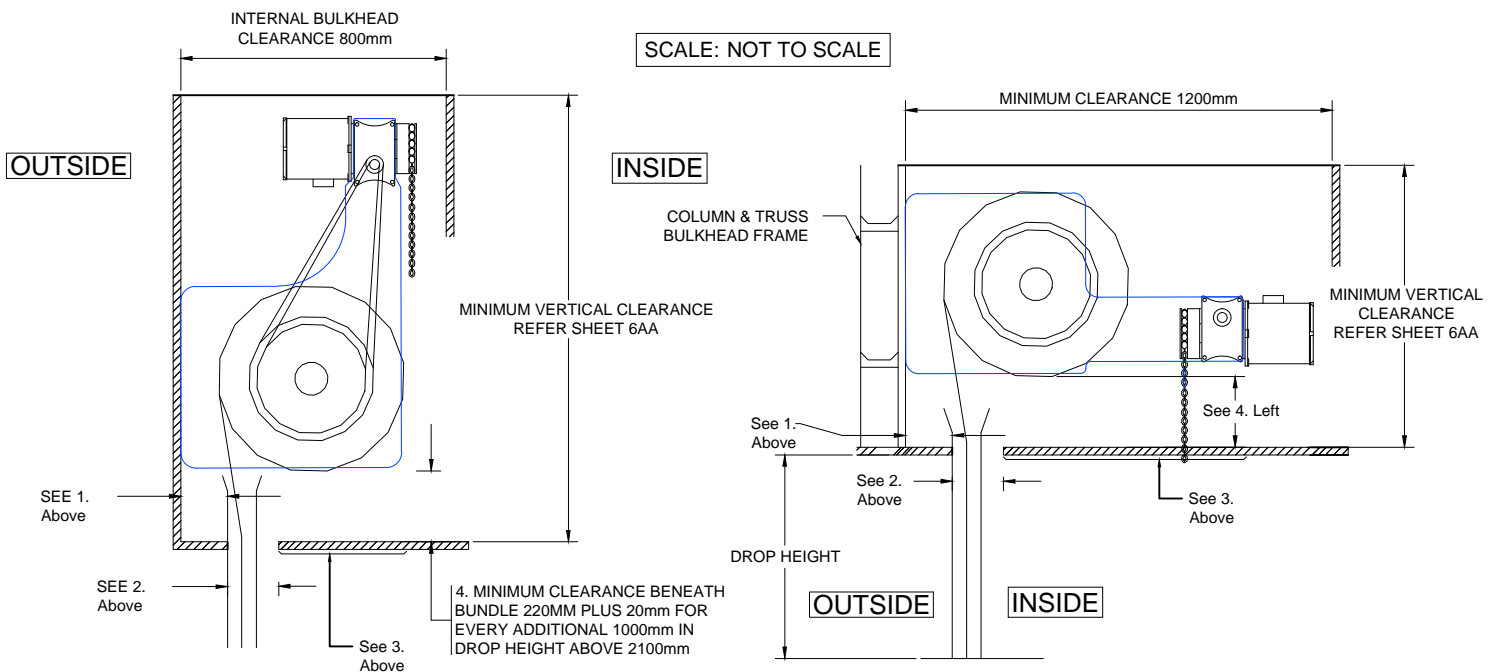


**ARCADE 3 MOTORISED SHUTTERS SUGGESTED
BULKHEAD DETAILS & OPERATIONAL CLEARANCES**



MOTOR BELOW (STD)



MOTOR ABOVE

MOTOR BEHIND

ARCO (QLD) has a continuous program of product development and reserves the right to change specifications at any time without notice

- PLEASE NOTE:
1. IF INADEQUATE ACCESS IS PROVIDED ARCO (QLD) WILL NOT BE HELD RESPONSIBLE FOR MAINTENANCE OR THE COSTS INCURRED TO CREATE ADEQUATE ACCESS
 2. ARCADE 3 ROLLER SHUTTERS WEIGH APPROXIMATELY 25kg/m². THEREFORE THE SHUTTERS MUST BE INSTALLED TO STRUCTURAL SUPPORTS, I.E. RHS STEEL POST, CORE FILLED MASONRY, TILT UP CONCRETE PANELS
 3. ALL STRUCTURAL SUPPORTS FOR BRACKETS AND SIDE GUIDES TO BE PROVIDED BY OTHERS
 4. THE ABOVE DETAILS ARE ONLY APPLICABLE TO THE ARCADE 3 ROLLER SHUTTER
 5. ALL WIRING AND SETTING OF LIMITS BY OTHERS (OPTIONAL). UNLESS INCLUDED IN QUOTE