

A5000

Vertical Lift
Counterweight
Balanced Door

FEATURES

CUSTOM BUILT
FOR ALL
STRUCTURAL
REQUIREMENTS
AND
ARCHITECTURAL
DESIGNS

CLADDING
VERSATILITY

EASE OF
OPERATION

NON-INTRUSIVE
TO BUILDING
EXTERNAL
AND INTERNAL
FACADE



A5000 - Vertical Lift Counterweight Balanced Door

The A5000 Vertical Lift Counterweight Balanced Door is custom made and designed for all applications large or small openings and where security and superior appearance is required and also where noise or temperature control may be an issue.

The main benefits of A5000's Vertical Lift Counterweight Balanced Door is that it achieves the lowest maintenance with the highest operation cycles, able to be designed in a variety of cladding and glazing types.

The A5000 is commonly used in the commercial and domestic sectors for example Car Park Entries, Loading Locks, Cool Rooms and Security Areas.

The A5000 can be either operated manually or motorised.

Our Product Range

Quality in every product



A1000
Tilt Up Door



A1500
Fully Recessed Door



A2000
Hingeway Door



A3000
Foldaway



A5000
Vertical Lift



STADIUM
Roller Grille



ARCADE 2
Roller Shutter



ARCADE 3
Roller Grille



MIKADO
Folding Door



SLIMLINE
Roller Shutter



CASINO
Aluminium Roller Grille



CLEAR ROLLER
Roller Shutter



Q 100
Steel Roller Shutter

Features and Benefits

Recommended Specification

A5000 is custom built for each specific application. Please contact ARCO (Qld) for any technical assistance in design and installation. Listed below are some of the main design considerations when specifying the A5000:

- Operational Requirements.
- Opening Dimensions.
- Structural Requirements.
- Architectural Requirements.

Therefore it is important to accurately measure the opening dimensions and adequately specify any requirements.

Opening Requirements

The A5000 Vertical Lift Counterweight Balanced Door requires operational clearances as well as permanent space for its accommodation. These dimensions vary depending on the application. It is important to take these in to consideration especially the operational clearances as they impinge on other design criteria, for example the drive through clearances.

Motorisation

Motorisation requires the addition of:

- Motorisation Guides.
- Drive Unit, Including Torque Limiter.
- Independent Limit Switches.
- Overhead Shaft.
- Control System.

When a motorised door is ordered the above mentioned items are included as they are integral components of the door. Motorisation may be fitted to an existing manual door however this may require extensive modification.

Locking

Locking is normally provided on manual operated doors only. Pad bolts are fitted internally to allow the door to be latched in the closed position. These can be fitted with padlocks for additional security.

Locking for motorised doors is usually locked via the motor however additional security is available, for example electric or magnetic locks.

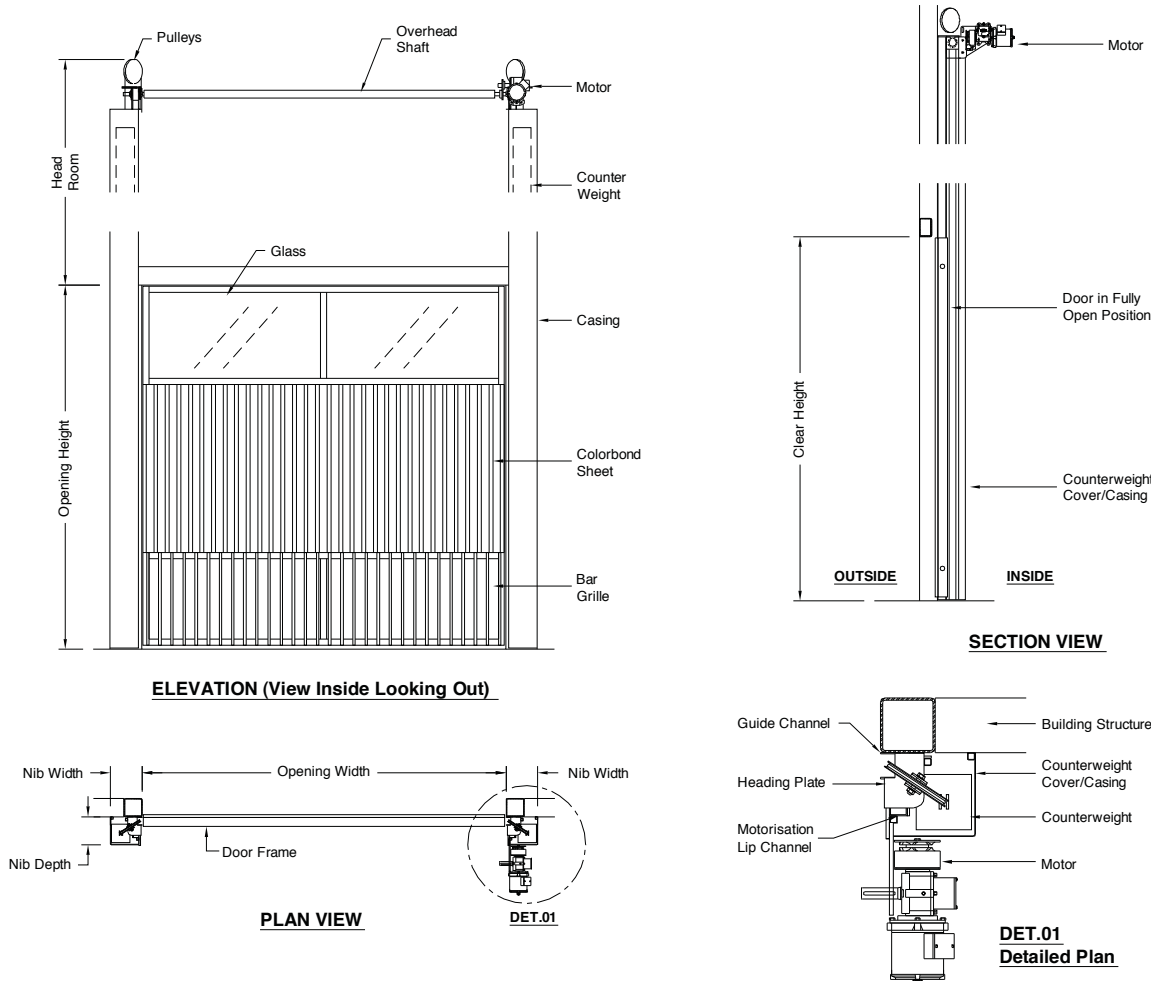
Cladding / Glazing

Being a counterweight balanced door the ARCO (Qld) A5000 Vertical Lift Counterweight Balanced Door can be designed to accept a wide variety of cladding and glazing materials.

The following combinations of glazing and cladding are quite common:

- Sheeting products such as Trimdek and Custom Orb.
- Toughened Laminated Glass.
- Polycarbonate, Acrylic, Perspex and Laserlite etc.
- Aluminium Composite Panels (ACP).

A5000 Specifications



ARCO (QLD) has a continuous program of product development and reserves the right to change specifications at any time without notice.